

THE TECHNOLOGY SOLUTION



3D Monolithic Precast
Construction Technology Solution

THE TECHNOLOGY SOLUTION

Salmon Leap Associates India Pvt. Ltd. has signed a Joint Venture with EMOLJAC Investments Pty Ltd., Australia. EMOLJAC brings in the patented technology for residential, commercial, institutional, educational, healthcare and other construction related sectors.

The company that will undertake this activity in India and the sub-continent region is hoMMission India Pvt. Ltd.

hoMMission would provide comprehensive 3D modular concrete structure building systems that will revolutionize the way construction is currently undertaken in country.

This technology is implemented in various countries including Australia, UAE and Beirut and will be implemented throughout the GCC countries, MENA and North African countries.

The 3Dimensional pre-cast modular building system reduces overall construction time, cost, labour and gives superior acoustic, thermal and fire rating properties.

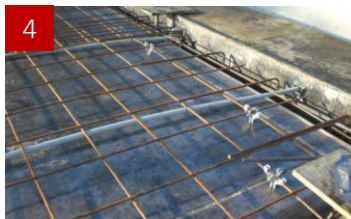
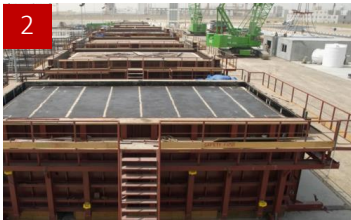
The technology system that produces the module is fully automated and hydraulically driven which monitors the mould to maintain the production

process within the fine tolerances ($\pm 3\text{mm}$) that ensure accurate repetitious casting on a daily basis.

The unique technology application is summarized below

- ✓ The modules unlike traditional flat pre-cast panels, uses a process of producing five panels in a single pour, or a three-dimensional shape creating a pre-designed shaped room.
- ✓ The moulds are customizable during the modules' design process. All openings - doors and windows, access points—piping and conduit and insulation are designed into the mould. Building all the features into the mould's design reduces project turnaround time and costs.
- ✓ This method is replicated and the modules are fitted together—side-by-side or atop of each other. This allows the roof of the first module to become the floor of the second module as they are vertically stacked, similar to Lego blocks or bricks.
- ✓ The ability to fit the modules together reduces construction time.

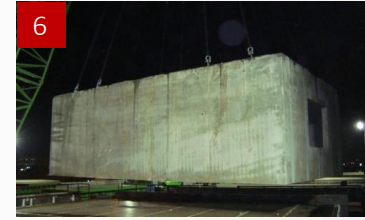




THE CONSTRUCTION TECHNOLOGY

Enabling Paradigm Shift

1. Reinforcing & insulation
2. High – tech steel computerized mould system
3. Reinforcement lifted & placed
4. First and Second fix MEP positioned
5. Concrete - *super plasticized, low -shrinkage 40 Mpa concrete*
6. Lift at strength of 14.20 Mpa
7. Cure & commence fit out
8. Transport to erection position
9. Lift modular unit into place & assemble
10. Finish





for further information please contact

Mr S Jayaseelan Vijay

Managing Director

E: sjvijay@salmonleap.co.in

M: +91 99 862 544 4 4

Ms Sheila E. Britto

Director

E: sheila@salmonleap.co.in

M: +91 99 014 555 0 0